

Name \_\_\_\_\_

# My Homework

## Lesson 5

## Time to the Hour: Analog

### Homework Helper



Need help? [connectED.mcgraw-hill.com](http://connectED.mcgraw-hill.com)

On an analog clock, the **hour hand** is shorter.  
The **minute hand** is longer.



11 o'clock



6 o'clock

## Practice

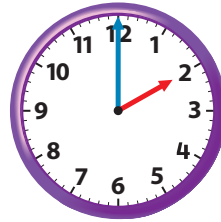
Tell what time is shown. Write the time.

1.



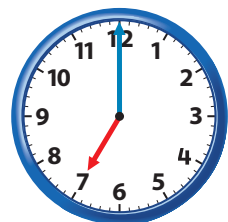
\_\_\_\_\_ o'clock

2.



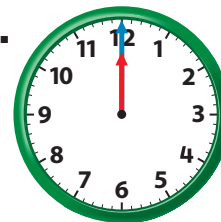
\_\_\_\_\_ o'clock

3.



\_\_\_\_\_ o'clock

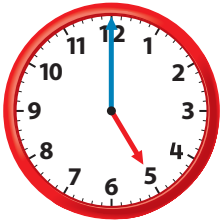
4.



\_\_\_\_\_ o'clock

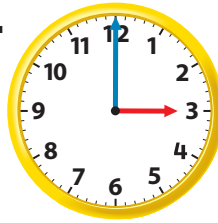
Tell what time is shown. Write the time.

5.



\_\_\_\_\_ o'clock

6.



\_\_\_\_\_ o'clock

7. Mr. Smith's class starts at 9 o'clock. It ends one hour later. What time is it over?

\_\_\_\_\_ o'clock

8. Miguel has soccer practice at 7 o'clock. It lasts for one hour. What time is the practice over?

\_\_\_\_\_ o'clock

## Vocabulary Check



Complete the sentences.

**minute hand**

**hour hand**

9. On an analog clock, the \_\_\_\_\_ is shorter.  
The \_\_\_\_\_ is longer.



**Math at Home** Ask your child to say the times to the hour in order, beginning with 1 o'clock (1 o'clock, 2 o'clock, 3 o'clock, and so on).